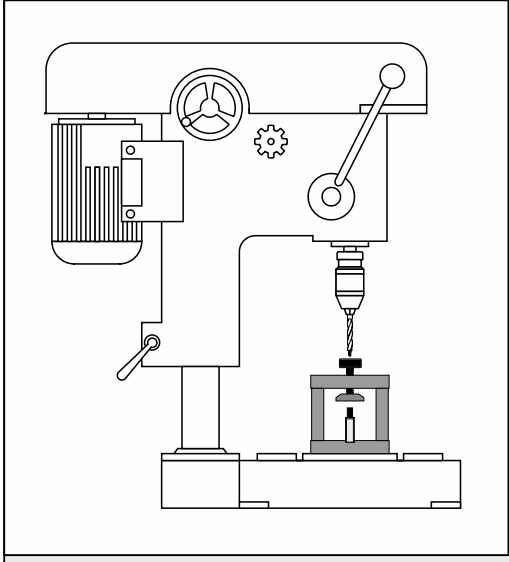




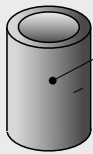
Drilling device (BIG) (use with pillar drill)



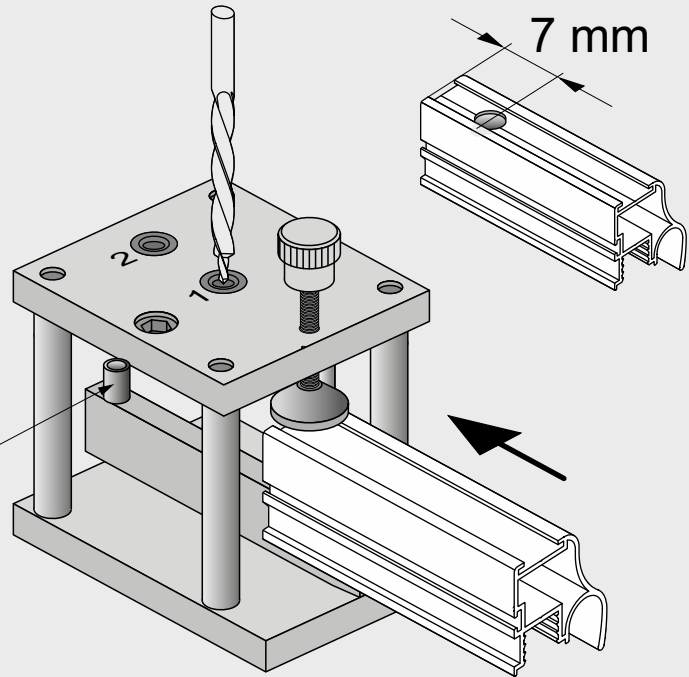
Drilling of assembly openings

Step drill bit should be used $\text{Ø}6.5 \times 9.5$

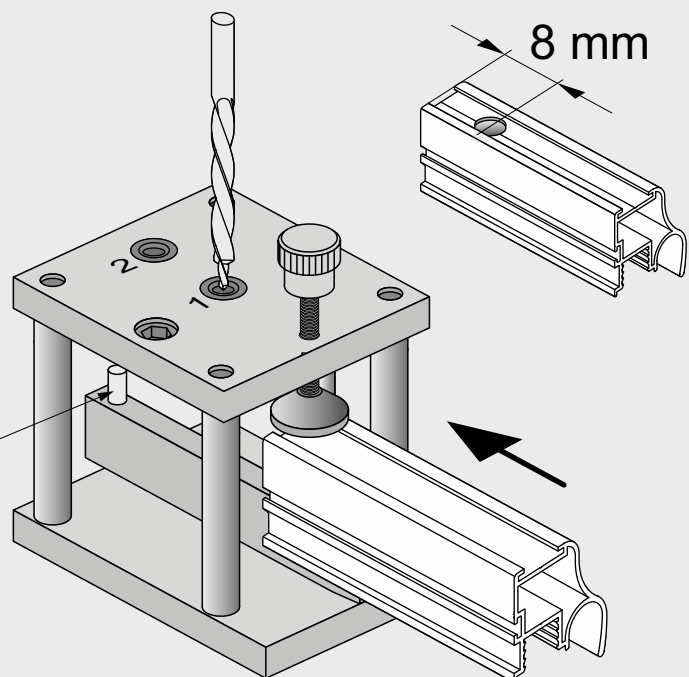
When opening should be **7 mm** from the end of handle use distancing spacer



Distancing spacer



When opening should be **8 mm** from the end of handle do not use spacer

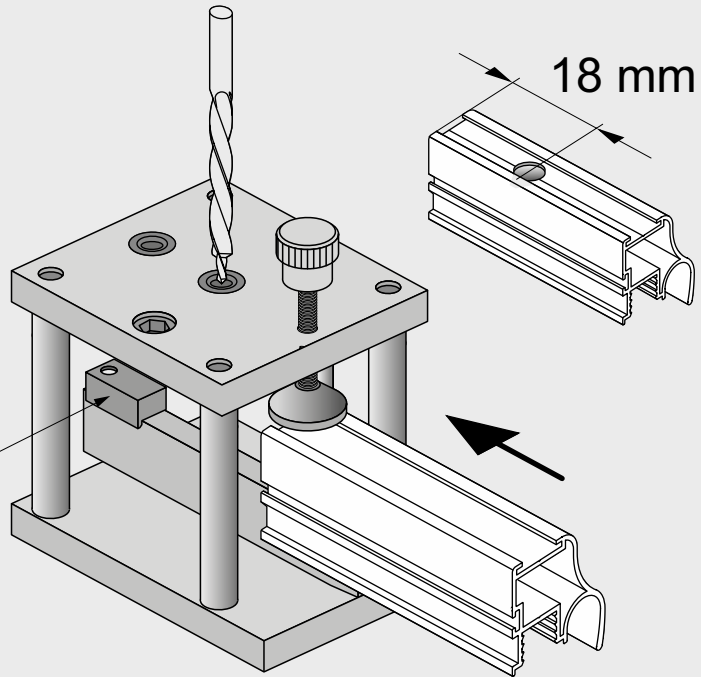
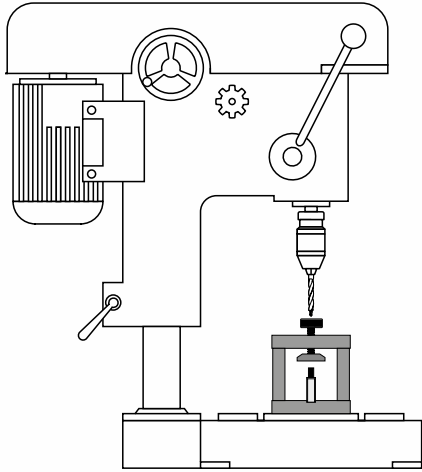


Drilling device (BIG) (use with pillar drill)

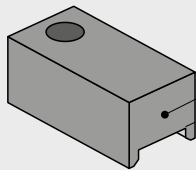


Drilling of assembly openings

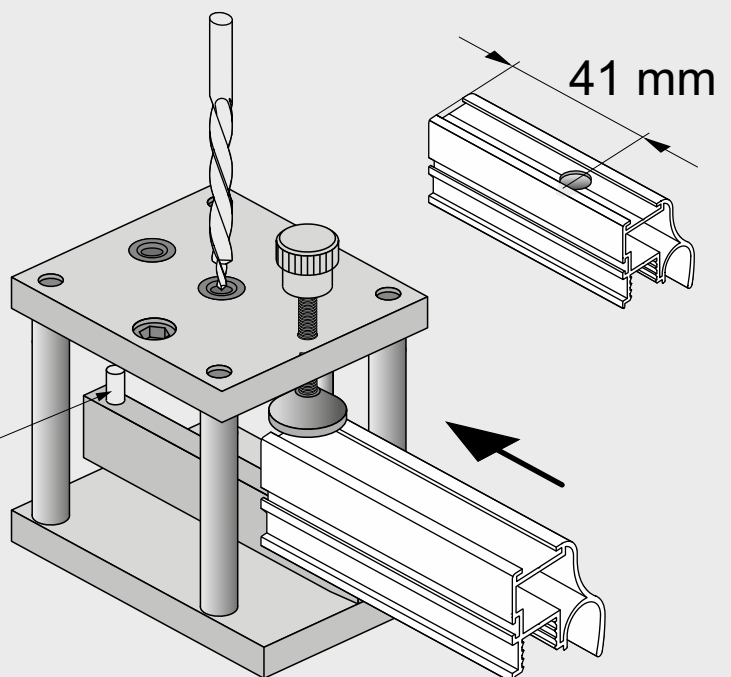
Step drill bit
should be used $\text{Ø}6.5 \times 9.5$



When opening should be
18 mm from the end of handle
use distancing block



Distancing block



When opening should be
41 mm from the end of handle
do not use spacer